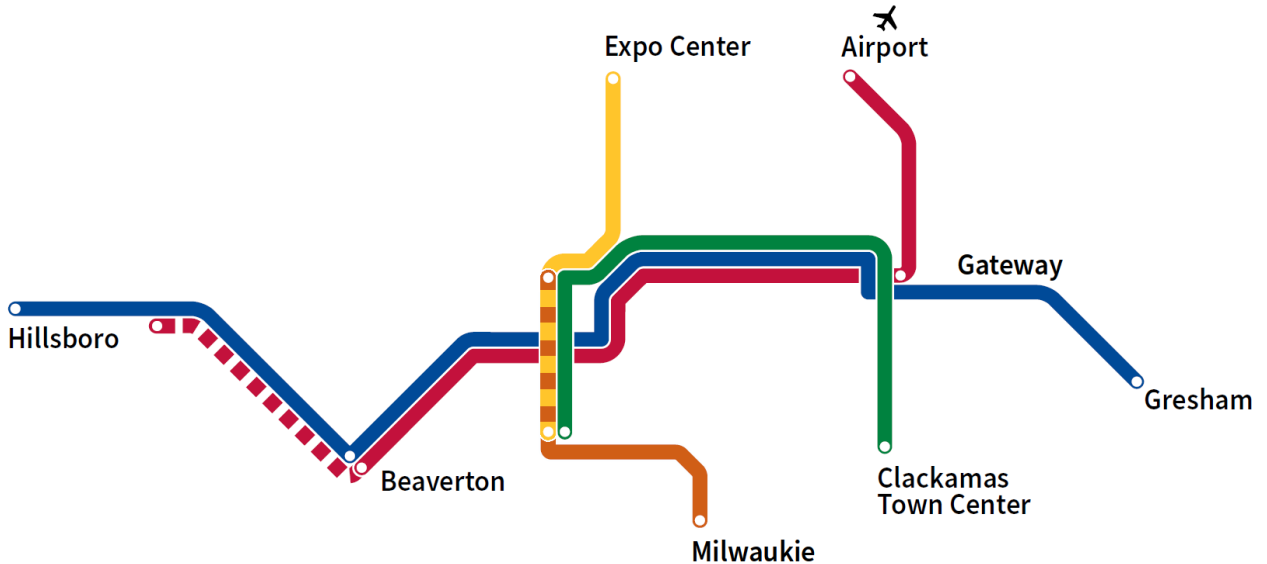


# A BETTER RED



A Better Red extends MAX Red Line west to serve 10 more stations and improves schedule reliability for the entire MAX system.

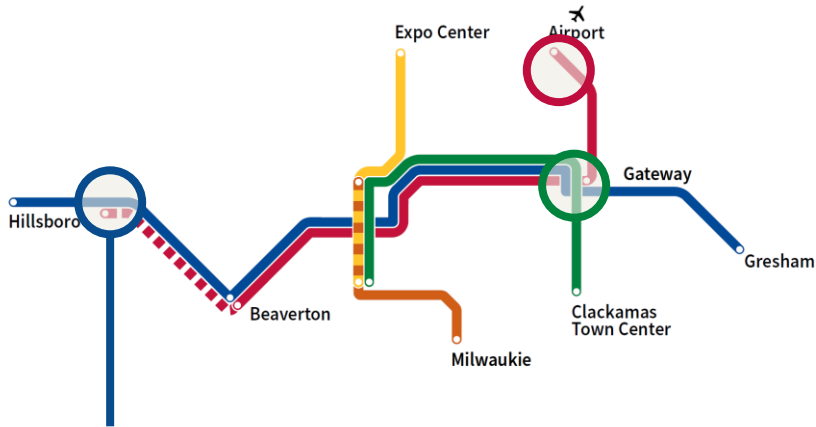


# Project Benefits

- Extends MAX Red Line west to serve 10 more stations
- Improves reliability for the entire MAX system
- Adds new multi-use paths at Gateway and PDX
- Creates up to 1,200 jobs
- Includes ambitious goals for Disadvantaged Business Enterprise (DBE) contracting
- Leverages about \$100 m federal funding



# Construction areas

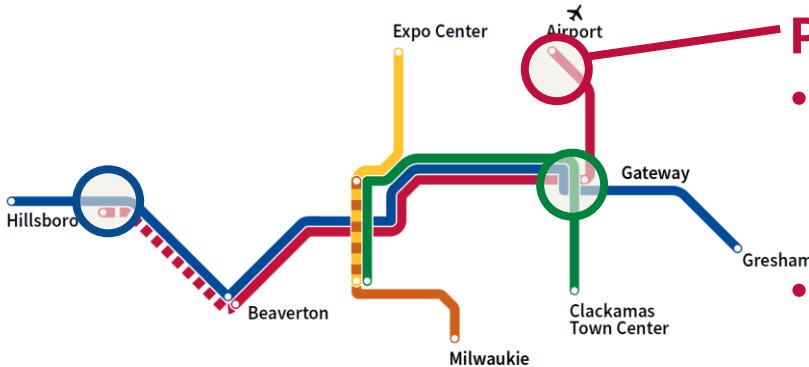


## Fair Complex/Hillsboro Airport Station:

- Signals and switches
- New walkway and break facility for MAX operators



# Construction areas

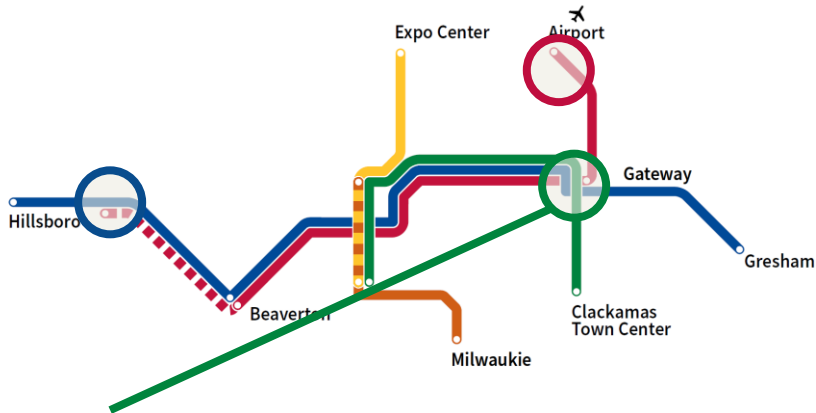


## PDX:

- Second track at single-track bottleneck
- Rebuild station platform
- New MUP connecting PDX to NE 82nd Way



# Construction areas



## Gateway:

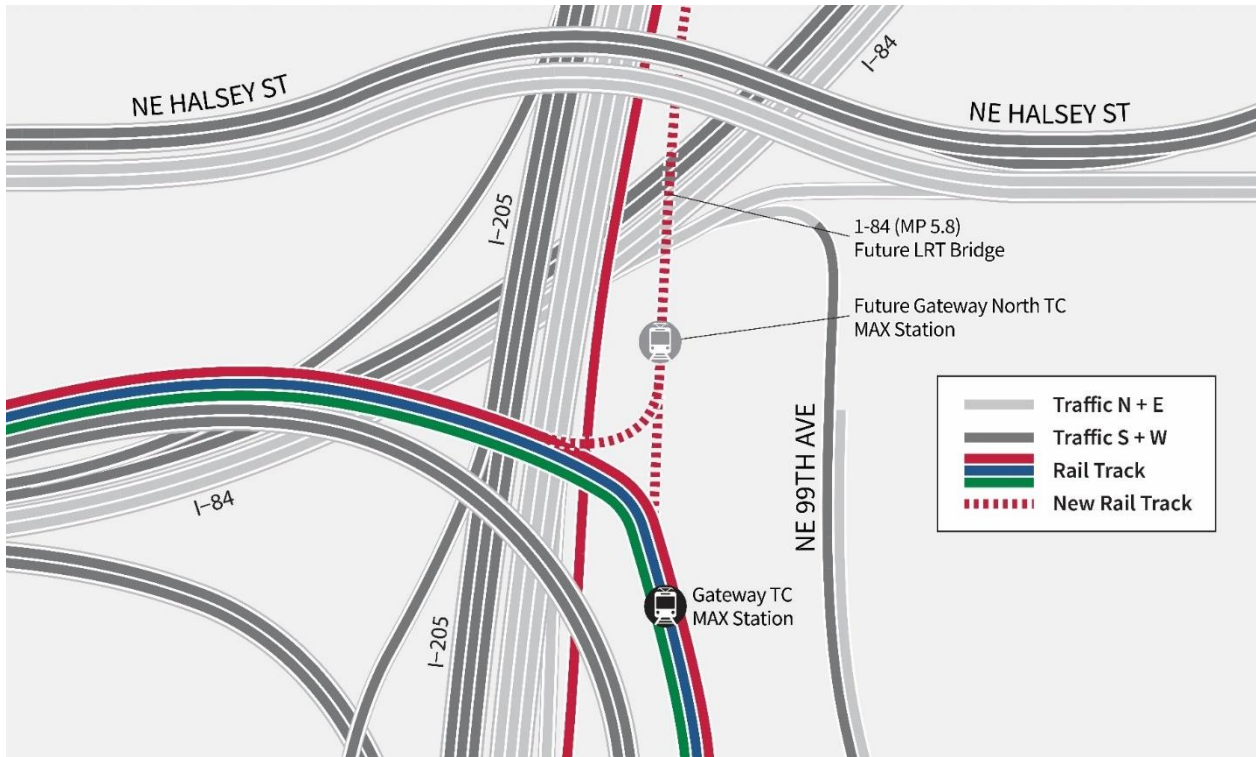
- Second track at single-track bottleneck
- Two bridges:
  - Over existing MAX track and I-205 MUP
  - Over I-84 and UPRR tracks, with new MUP to Gateway Green Park
- New station platform for Red Line trains heading toward City Center







# Gateway

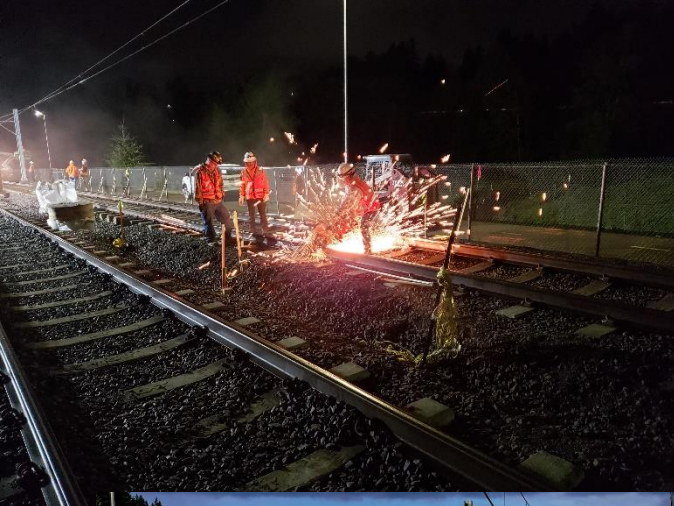


# ESTIMATED PROJECT SCHEDULE



# What to expect during construction

- MAX service interruptions, with shuttle buses (8)
- Nighttime lane closures on I-84
- Occasional closures of I-84 East Exit 7–Halsey/99<sup>th</sup>
- Nighttime and weekend closures of I-84 West (2)
  - Tentative: June 2022
- Weekend closures of I-84 (2)
- Daytime pile driving adjacent to I-84
- Nighttime and weekend construction

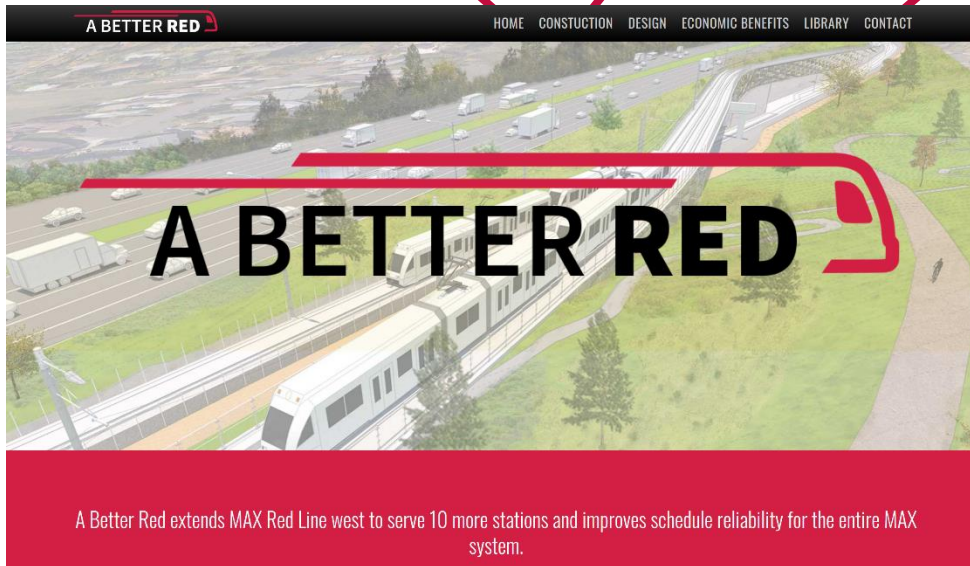


# trimet.org/betterred

**HOME:**  
Video with  
Gateway flyover

**CONSTRUCTION:**  
Weekly updates

**CONTACT:**  
Sign up for email  
updates



# Comments & Questions?

[trimet.org/BetterRed](http://trimet.org/BetterRed)

Email: [BetterRed@trimet.org](mailto:BetterRed@trimet.org)

Phone: 503.962.2150

Libby Winter

Email: [WinterLi@trimet.org](mailto:WinterLi@trimet.org)